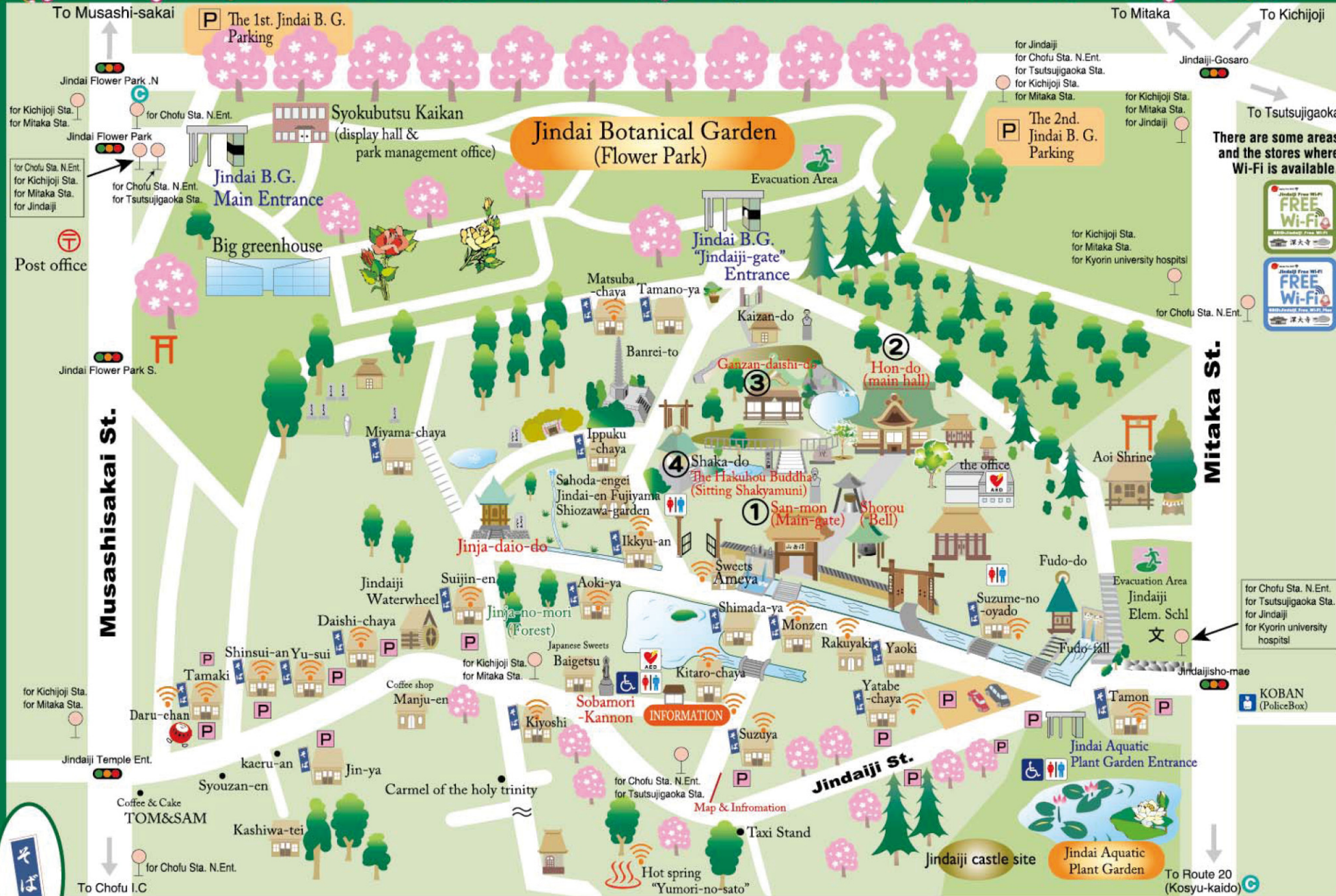


# Walking Map Of Jindaiji



## To Jindaiji



Keio-bus (丘 21)  
from Tsutsujigaoka  
Sta. North entrance  
<approx. 15minutes>



Keio-bus (調 34)  
from Chofu Sta.  
North entrance  
[No.14]  
<approx. 15minutes>



Odakyu-bus (吉 04)  
from JR Kichijoji Sta.  
South entrance  
[No.6]  
<approx. 25minutes>

Odakyu-bus (鷹 65)  
Mitaka Sta. South  
entrance [No.3]  
<approx. 25minutes>

There are some areas  
and the stores where  
Wi-Fi is available.

for Chofu Sta. N.Ent.  
for Tsutsujigaoka Sta.  
for Jindaiji  
for Kyorin university  
hospitals



This symbol means **Soba** (buckwheat noodles) restaurant. **Chofu Sightseeing Association**

TEL 042-481-7184  
FAX 042-488-3099